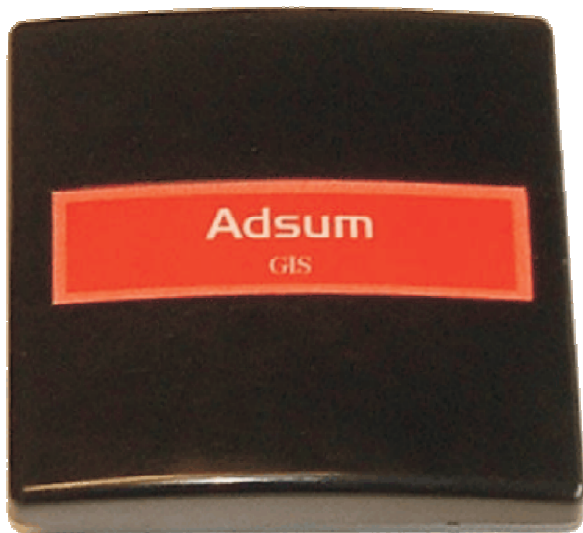


# Access Reader



## **Contactless Access Reader**

This ISO 14443 / Mifare compatible card reader is intended for attachment to walls and surfaces where doors, gates, turnstiles and payment points may be situated. The contactless reader is housed in a ergonomically designed plastic enclosure and can be fitted to a standard UK light switch housing.

Readers can be supplied in a range of colours and can be either square or circular mouldings.

A range of interfaces are available to ensure suitability for a range of installations and include RS232, RS485 and Wiegand.

To allow simple access control installations there is also a 12Vdc relay output which can directly drive a door solenoid.

Feedback to the cardholder is achieved by using a dual colour LED and an optional buzzer.

## Technical Specification

- 8-bit single chip microcontroller with variable clock speed
- 64Kbytes internal Flash memory for program storage
- 1280byte internal RAM
- 2Kbyte of internal Eeprom for secure storage of keys
- Eeprom expandable up to 32Kbyte (external)
- LED (green and red)

## Card Interface

- ISO14443-A or ISO14443-B (optional)
- Mifare Classic / Ultralight supported / T=CL (optional)
- Reading range up to 5cm

## Host Interface

- RS232 - Asynchronous proprietary protocol for connection to RS232C with a nominal data transfer rate of 9600 baud.
- Wiegand 26bits – Asynchronous interface using 26 bits signalling whereby a card and facility/site codes is sent to a host interface.
- Wiegand 34bits – Asynchronous interface using 34 bits signalling whereby the card serial number (CSN) is sent to a host interface.  
Alternative signalling is available. Please contact GIS.
- RS485 – Asynchronous RS485 interface for connection to RS485 hosts with a nominal data transfer rate of 9600 baud.

## Power

Consumption: 130mA (typ) while scanning smart card.

External power input: 7.5-24Vdc / 250mA (max)

## Relay

A 12Vdc relay output (open drain) is available with currents up to 200mA. Only available with external 12V input.

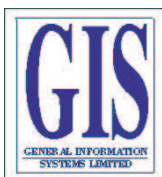
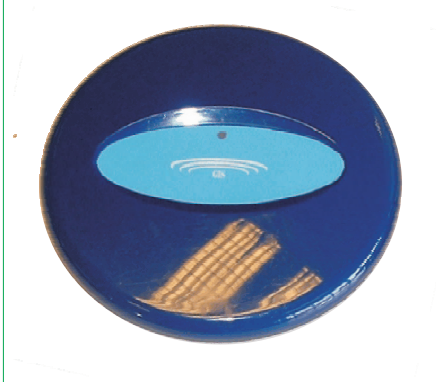
**DIMENSIONS:** 87mm x 87mm x 40mm

**WEIGHT:** 80 grams

## Standards and Approvals

- CE: EN61000-6-1:2001, EN61000-6-3:2001, EN60950:2000, EN300 330-1 V1.3.1, EN300 330-2 V1.1.1, EN301 489-3

*Specifications are subject to change without notice - Mar 2008*



## General Information Systems

Unit 2, The Woodland, Barton Road, Haslingfield, Cambs CB23 1LW, UK

Tel.: +44 (0) 1223 873333

Fax.: +44 (0) 1223 870303

Http://www.gis.co.uk - Email: info@gis.co.uk